

IMAGE INTERGRATION CONFIGURATION

CONTENT:-

1. System Environment Side Changes.

- I. FTP Configuration
- ii. Configure an FTP Server Site
- iii. Configuring firewall rules
- iv. Enable SMB File sharing support

2. Data Base Side Changes.

- I. tblmstimagesinvestigations table
- ii. Path of image
- iii. usernameOfComputer
- iv. Password
- v. computerIPAddress
- vi. passwordOfComputer

3. Image Server Side Changes.

- I. create the folders in htdocs
- ii. Give Permissions for all folders.

4. War File Side Changes.

- I. filepath.properties.
- ii. Server System IP,
- iii. User name
- iv. Password

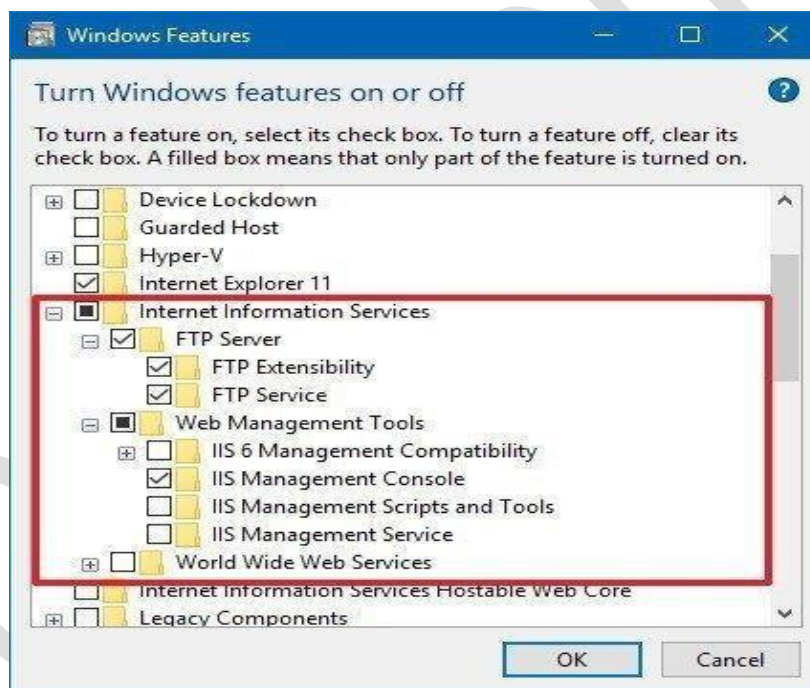
5. Eye Drawing Configuration

- I. Image server setup
- ii. Admin side changes

System Environment Side Changes.

I. How to install the FTP server components on Windows10

- Open **Control Panel**.
- Click on **Programs**.
- Under "Programs and Features," click the **Turn Windows features on or off** link.
- Expand the "Internet Information Services" feature, and expand the **FTP server** option.
- Check the **FTP Extensibility** and **FTP Service** options.
- Check the **Web Management Tools** option with the default selections, but making sure that the **IIS Management Console** option is checked.

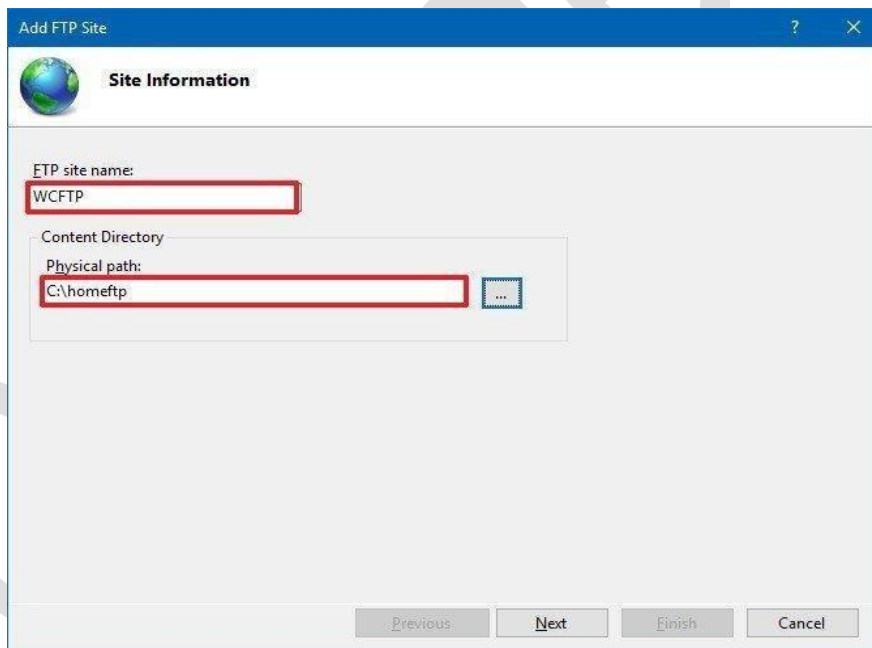


- Click the **OK** button.
- Click the **Close** button.

ii. How to configure an FTP server site on Windows 10

- Open **Control Panel**.
- Click on **System and Security**.
- Click on **Administrative Tools**.
- Double-click the **Internet Information Services (IIS) Manager** shortcut.
- On the "Connections" pane, right-click **Sites**, and select the **Add FTP Site** option.
- In the FTP site name (**yaragoftpuser**), type a short descriptive name for the server.
- In the "Content Directory" section, under "Physical path," click the button on the right to locate the folder you want to use to store your FTP files.

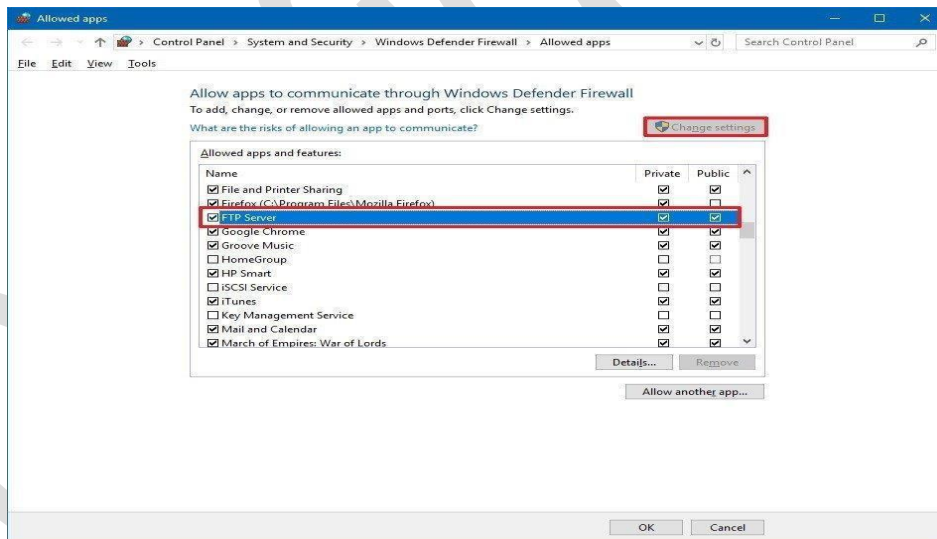
(D: //IMAGESERVER/htdocs)



- Click the **Next** button.
- Use the default **Binding** settings selections.
- Check the **Start FTP site automatically** option.
- In the "SSL" section, check the **No SSL** option.
- Click the **Next** button.
- In the "Authentication" section, check the **Basic** option.
- In the "Authorization" section, use the drop-down menu, and select **All users'** option.
- Check the **Read** and **Write** options.
- Click the **Finish** button.

iii. Configuring firewall rules:

- Open **Windows Defender Security Center**.
- Click on **Firewall & network protection**.
- Click the **Allow an app through firewall** option.



- Click the **Change settings** button.
- Check the **FTP Server** option, as well as the options to allow **Private** and **Public** access.

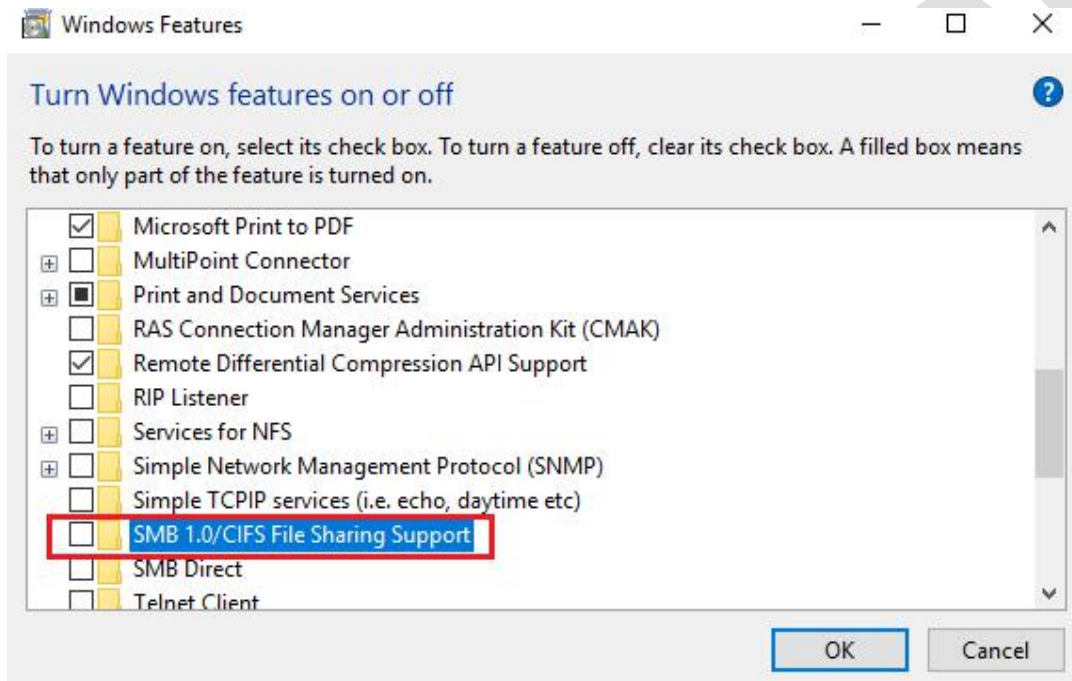
FTP Configuration in Windows Server 2012R2

- Log in to the server by using an administrative account
- Open **Server Manager**
- Go to **Manage > Add Roles and Features**
- Click Next
- Select **Role-based or feature-based installation**
- Click Next
- Select a server from the **server pool**, and select your server
- Click Next.
- Scroll down and put a check mark in **Web Server (IIS)**
- An Add features window pops up. Put a check mark in the Include management tools (if applicable) option
- Click Add Features button
- Click Next
- Click Next
- Scroll down and put a check mark in: **FTP server, FTP Service and FTP Extensibility.**
- Click Next
- Click Install
- When installation is finished, click Close.

NOTE: FTP Configuration & Allow Fire wall follow the above same steps

Enable SMB File sharing support:

- Click Windows Button
- Search Turn windows features on (or) off
- Enable SMB1.0/CIFS File sharing support
- Click ok
- Restart the system



DATA BASE SIDE CHANGES:

- I. Install Image Server in server system.
- II. Once image server installed and EMR scheme imported go to **tblmstimagesinvestigations** table.
- III. Replace image server IP address in **pathOfImages**.
- IV. Replace image server IP address in **computerIPAddress**
- V. Replace **usernameOfComputer** as image server system user name (Administrator).
Note :Make sure “usernameOfComputer” should not have space
- VI. Replace **passwordOfComputer** as image server system password.
- VII. Replace **computerOS** as image server operating system
 - Repalce all Computer IP & Path of Image & User Name & Password Use this Query ---

```
update tblmstimagesinvestigations set computerIPAddress = '192.168.29.136'  
where investigationId <>0;
```

```
update tblmstimagesinvestigations set computerOS = 'Windows' where  
investigationId <>0;
```

```
update tblmstimagesinvestigations set usernameOfComputer = 'Windows' where  
investigationId <>0;
```

```
update tblmstimagesinvestigations set passwordOfComputer = 'Windows' where  
investigationId <>0;
```

```
update tblmstimagesinvestigations set pathOfImages =  
replace(pathOfImages,'192.168.0.190','192.168.29.136') where investigationId  
<>0;
```

Viii. Cross Check imageType:

- imageType=1 is for ocular images in examination screen and lab module upload option (File Upload Path).
- imageType=2 is for demographic, patientphoto, eyedrawing, previousattachment.
- imageType=3 is for workups
- imageType=4 is for Cataract and refractive.
- imageType=5 is for inpatientattachment (Admitted screen).

Image Server Side Changes - htdocs

- II. According to the investigationName create the folders in htdocs (Create a Folder, Folder name should as it is investigationName).

(D://IMAGESERVER>htdocs>(create folders).

- III. Give Permissions for all folders.

- IV. **Select File Properties>Sharing>Advance Sharing > Full Control> Read/write>Apply.**

Select Properties>sharing>share>select everyone>select Read/write>share.

NOTE: Access the folder in different client system.

War Files Side Changes:

- Change **Server System IP, User name and Password** in filepath.properties.
- **In war file path: yaragoemrjavaclient>Webpps > webin > classes>filepath.properties.**

Link For step up FTP: <https://www.windowscentral.com/how-set-ftp-server-windows-10>.

EYE DRAWING INTEGRATION

1. Images server setup – htdocs

- a) According to the investigationName create the folders in htdocs (Create a Folder, Folder name should as it is investigationName).
(D://IMAGESERVER>htdocs>(create folders).
- b) Give Permissions for all folders.

Select File Properties>Sharing>Advance Sharing > Full Control> Read/write>Apply. Select Properties>sharing>share>select everyone>select Read/write>share.

2. Admin Side Changes.

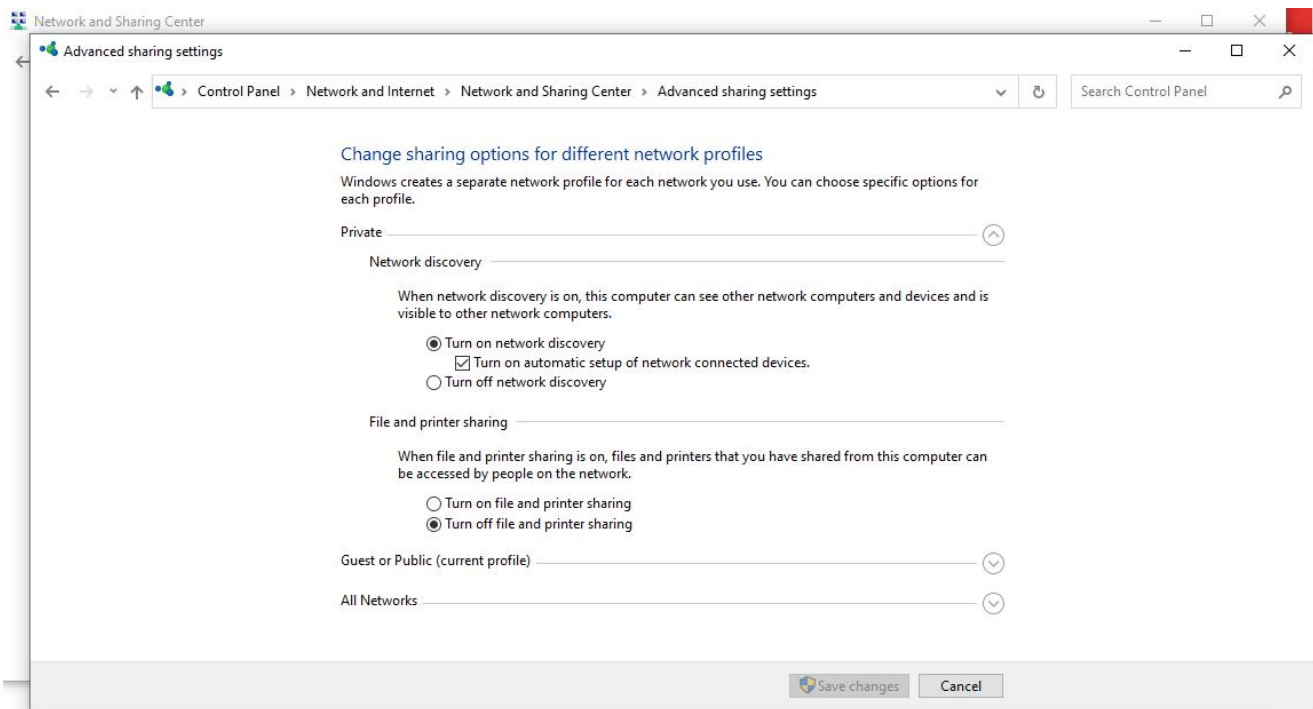
- a) master>Examination Master>Eye Part Main>add eye drawing image.

QUERIES/ISSUES FACED AFTER IMAGE INTEGRATION

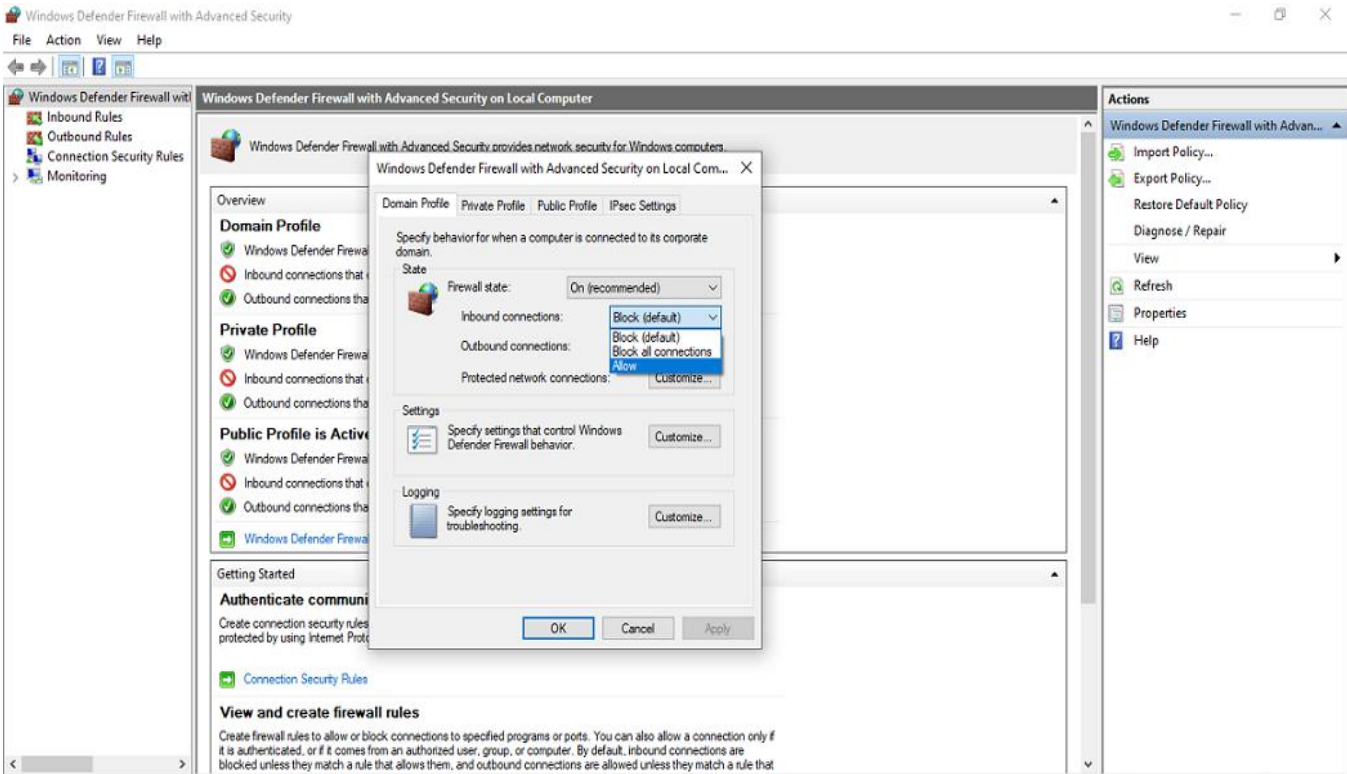
1. Attached Images/files are not displaying in client system but in server system is displaying

Solution : In “Control Panel\Network and Internet\Network and Sharing Center\Change advanced sharing settings”

Under private make sure “Turn on network discovery” should be checked



And in “Windows Defender Firewall With Advanced Security”
Then right click on above name/properties
“Inbound connections” should allow



2. Apache 2.2 is stopped and not able to start

Solution : Make Sure “World wide web” services status should not “Running” If this Running stop the services and update “statup type” to “Manual” under properties then start apache2.2.

Same way update “statup type” to “Automatic” for “Apache2.2”.